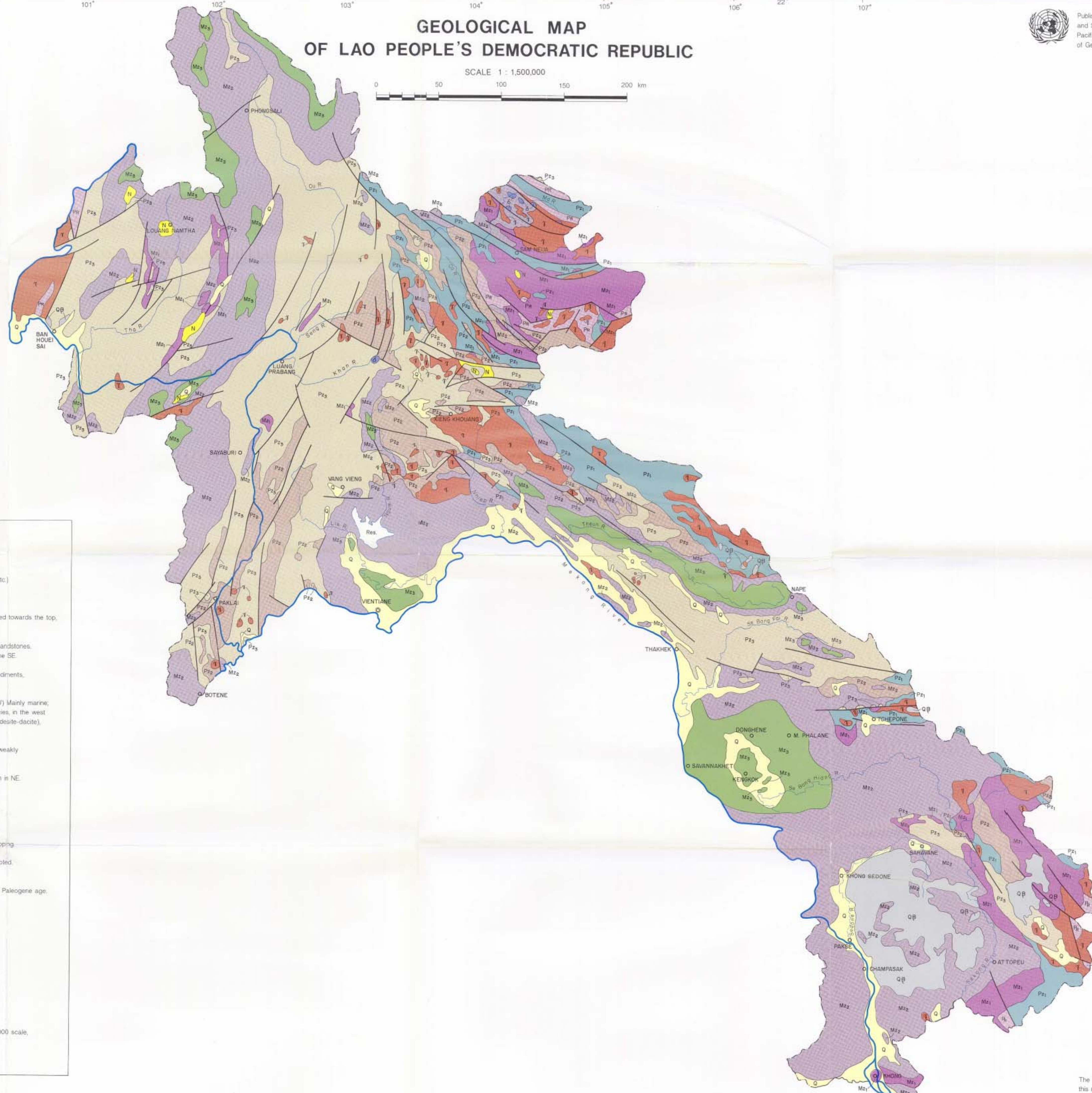




GEOLOGICAL MAP OF LAO PEOPLE'S DEMOCRATIC REPUBLIC



SCALE 1 : 1,500,000



LEGEND

- Q Quaternary, Alluvial deposits of the Mekong river and its tributaries.
- QB Quaternary (possible also Neogene in part) basalt, including alkaline varieties (basalte, limburgite etc.)
- N Neogene, Terrestrial deposits preserved in intermontane valleys, some lignite.
- M₃ Late Mesozoic, mainly Mid-Late Cretaceous, lower part mainly sandstones, predominantly fine-grained towards the top, with thick evaporites, especially rock salt and gypsum.
- M₂ Mid-Mesozoic, mainly Late Triassic to Early Cretaceous, predominantly terrestrial sediments, mainly sandstones. Thin coals in places. Marine Late Triassic occurs in the NE and the NW. Marine Liassic is found in the SE.
- M₁ Early Mesozoic, mainly Early-Mid Triassic. Mainly marine; terrestrial in certain areas. Mostly clastic sediments, some limestones. Volcanic rocks, mainly acidic (rhyolite, dacite, tuff) widespread in N and SE.
- P₃ Late Paleozoic (mainly Middle Carboniferous-Permian, some undifferentiated Early Triassic in the NW). Mainly marine; terrestrial in certain areas with coal. In the east, limestones are the dominant rocks of the marine facies, in the west and south clastic rocks dominate, with subsidiary limestones. Volcanic rocks, mainly intermediate (andesite-dacite), are widespread and of various ages, especially Permian.
- P₂ Mid-Paleozoic (mainly Devonian-Early Carboniferous, some Silurian), mainly marine rocks, in places weakly metamorphosed. Limestones commonly occur, and may be more or less recrystallized to marble.
- P₁ Early Paleozoic (Cambrian-Silurian) with probable Proterozoic. Some undifferentiated Lower Devonian in NE, less generally metamorphosed to phyllites and schists, and marble. Some basic meta-volcanics. Ultrabasic lenses occur in a narrow belt in the NE (see d).
- Pr Proterozoic gneisses and schists.

NB. The age of the Paleozoic formations is uncertain in many areas, in the absence of detailed mapping. The subdivisions P₂ 1,2,3, are therefore only a general indication of overall relative ages. The range extends into the Triassic above, and probably the Proterozoic below, in places, as noted.

- 1 Granite and lesser granodiorite and quartz diorite of Carboniferous, Permian, Triassic (dominant) and Paleogene age.
- 2 Ultrabasic rocks, peridotite and serpentinite of uncertain age, with associated gabbro etc.

GEOLOGICAL BOUNDARIES

Approximate position

FAULTS

Approximate position

This map is based largely on the Geological Map of Kampuchea, Laos and Vietnam, 1:1,000,000 scale, published by the General Department of Geology and Mines of Vietnam in 1988.

The boundaries and names shown on this map do not imply official acceptance or endorsement by the United Nations